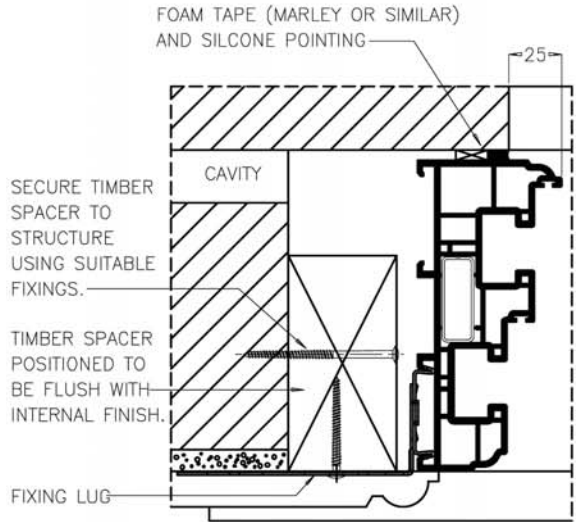
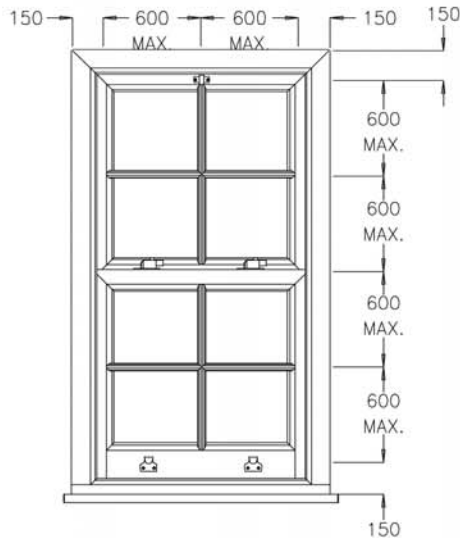
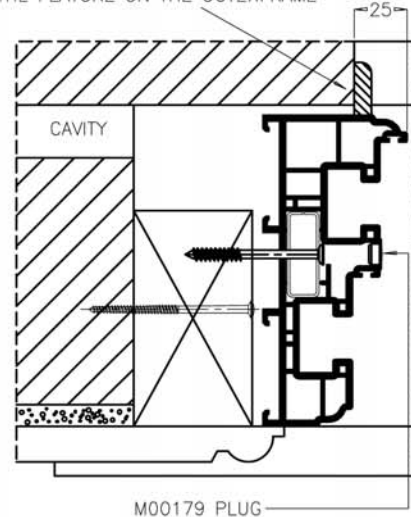


FITTING GUIDELINES

VERTICAL SLIDER FITTING



TRIM WOULD BE SUITABLE AS LONG AS IT DOES NOT LAP OVER THE FEATURE ON THE OUTERFRAME



POSITIONS FOR FIXINGS

FOAM FIXING SHOULD ONLY BE USED AS AN 'ASSIST' OR AS A VOID FILLER. IT MUST NOT BE USED AS AN ALTERNATIVE TO MECHANICAL FIXINGS. AFTER APPLICATION IT MUST BE CHECKED THAT THERE HAS BEEN NO FRAME DISTORTION, IE THAT THE GAPS BETWEEN THE SASH AND OUTERFRAME ARE UNIFORM.

WHEN FITTING THE FRAME IT IS TO BE ENSURED THAT THE SILL IS FITTED FLAT AND THAT IT IS NOT SUBJECT TO ANY DISTORTION OR BOWING. THE SILL MUST BE BEDDED FLAT SO AS TO ENSURE THERE IS NO AIR PENETRATION AT THE BASE.