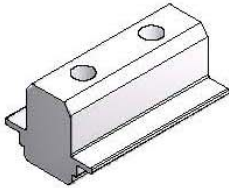
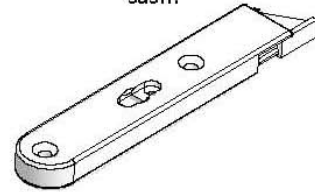


ADDITIONAL HARDWARE REQUIRED FOR BS7950 COMPLIANT ENHANCE SECURITY

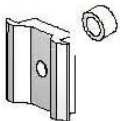


SECURITY BLOCK
For use on the top rail of the top sash. Ensures that there is still engagement in the head of the window if the top sash is jemmied downward.

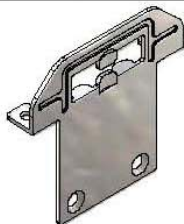


SECURITY TILT LATCH
With stainless steel reinforcement plate providing extra strength in the top corners of each sash.

SASH SPACER & 'O' RING
The spacer takes up any free play that exists between the sides of the sash and the jamb thus preventing the tilt latches from becoming disengaged if the sash is jemmied to the side.



SECURITY SASH LOCK
With its unique patent pending design (App No 0505041.4), the security sash lock, along with the security keep, ensures that the two sashes remain locked together when under attack.



SECURITY SASH LOCK KEEP
Made from stainless steel, the security keep has pressed in ribs and has two tangs which the cam of the security keep secures around.

